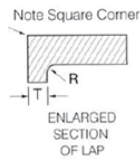
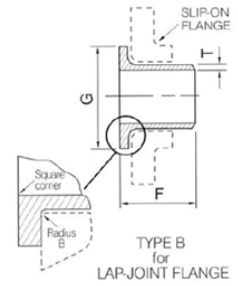
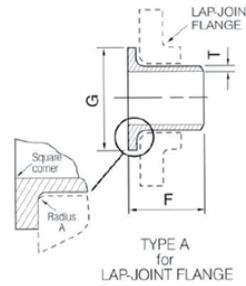
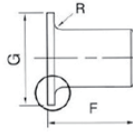


Lap Joint Stub Ends

管節



ANSI B16.9



MSS SP-43

DIMENSIONS							(unit: mm)			
Nominal Pipe Size (NPS)	Outside Dia. (OD)	Wall Thickness (T)				Dia. of Lap (G)	Length F		Radius R	
		Sch. 5S	Sch. 10S	Sch. 40S	Sch. 80S		ANSI	MSS	Type A (Max)	Type B (Max)
1/2	21.336	1.651	2.108	2.769	3.734	34.925	76.200	50.800	3.302	0.762
3/4	26.670	1.651	2.108	2.870	3.912	42.875	76.200	50.800	3.302	0.762
1	33.401	1.651	2.769	3.378	4.547	50.800	101.600	50.800	3.302	0.762
1 1/4	42.164	1.651	2.769	3.556	4.851	63.500	101.600	50.800	4.826	0.762
1 1/2	48.260	1.651	2.769	3.683	5.080	73.025	101.600	50.800	6.350	0.762
2	60.325	1.651	2.769	3.912	5.537	92.075	152.400	63.500	7.874	0.762
2 1/2	73.025	2.108	3.048	5.156	7.010	104.775	152.400	63.500	7.874	0.762
3	88.900	2.108	3.048	5.486	7.620	127.000	152.400	63.500	9.652	0.762
4	114.300	2.108	3.048	6.020	8.560	157.175	152.400	76.200	11.176	0.762
5	141.300	2.769	3.404	6.553	9.525	185.750	203.200	76.200	11.176	1.524
6	168.275	2.769	3.404	7.112	10.973	215.900	203.200	88.900	12.700	1.524
8	219.075	2.769	3.759	8.179	12.700	269.875	203.200	101.600	12.700	1.524
10	273.050	3.404	4.191	9.271	12.700	323.850	254.000	127.000	12.700	1.524
12	323.850	3.962	4.572	9.525	12.700	381.000	254.000	152.400	12.700	1.524
14	355.600	3.962	4.775			412.750	304.800	152.400	12.700	1.524
16	406.400	4.191	4.775			469.900	304.800	152.400	12.700	1.524
18	457.200	4.191	4.775			533.400	304.800	152.400	12.700	1.524
20	508.000	4.775	5.537			584.200	304.800	152.400	12.700	1.524
22	558.800	4.775	5.537			641.350	304.800	-	12.700	1.524
24	609.600	5.537	6.350			692.150	304.800	152.400	12.700	1.524

WEIGHTS						(unit: kg)				
Nominal Pipe Size (NPS)	F	Sch. 5S	Sch. 10S	Sch. 40S	Sch. 80S					
						ANSI	MSS	Sch. 5S	Sch. 10S	Sch. 40S
1/2	ANSI	0.068	0.090	0.136	0.115					
1/2	MSS	0.059	0.077	1.118	0.127					
3/4	ANSI	0.077	0.100	0.181	0.199					
3/4	MSS	0.068	0.086	0.154	0.168					
1	ANSI	0.145	0.227	0.299	0.385					
1	MSS	0.090	0.140	0.186	0.240					
1 1/4	ANSI	0.204	0.326	0.412	0.548					
1 1/4	MSS	0.131	0.208	0.263	0.349					
1 1/2	ANSI	0.231	0.367	0.533	0.675					
1 1/2	MSS	0.159	0.249	0.376	0.458					
2	ANSI	0.449	0.693	0.992	1.364					
2	MSS	0.245	0.376	0.539	0.743					
2 1/2	ANSI	0.684	0.924	1.563	2.079					
2 1/2	MSS	0.349	0.470	0.797	1.060					
3	ANSI	0.879	1.205	2.134	2.840					
3	MSS	0.467	0.638	1.133	1.508					
4	ANSI	1.191	1.640	3.035	4.227					
4	MSS	0.711	0.978	1.812	2.523					
5	ANSI	2.188	2.582	5.300	7.520					
5	MSS	1.046	1.237	2.537	3.601					
6	ANSI	3.000	3.610	6.900	10.420					
6	MSS	1.621	1.951	3.721	5.570					
8	ANSI	2.962	3.760	10.420	15.860					
8	MSS	2.453	3.103	5.890	10.120					
10	ANSI	7.020	8.450	18.120	24.280					
10	MSS	4.040	4.862	10.420	13.953					
12	ANSI	9.110	10.510	22.200	29.810					
12	MSS	6.600	7.110	14.950	19.930					
14	ANSI	11.780	14.190	*28.310	**37.800					
14	MSS	6.430	7.750	*15.460	**20.620					
16	ANSI	14.380	16.380	*32.680	**43.570					
16	MSS	7.910	9.020	*17.980	**23.980					
18	ANSI	16.510	18.810	*37.530	**50.030					
18	MSS	9.240	10.530	*21.000	**28.000					
20	ANSI	20.890	24.220	*41.660	**55.550					
20	MSS	11.680	13.540	*23.300	**31.070					
22	ANSI	23.200	26.900	*46.280	**61.070					
22	MSS	-	-	-	-					
24	ANSI	29.330	33.630	*50.450	**67.270					
24	MSS	16.520	18.940	*28.410	**37.880					